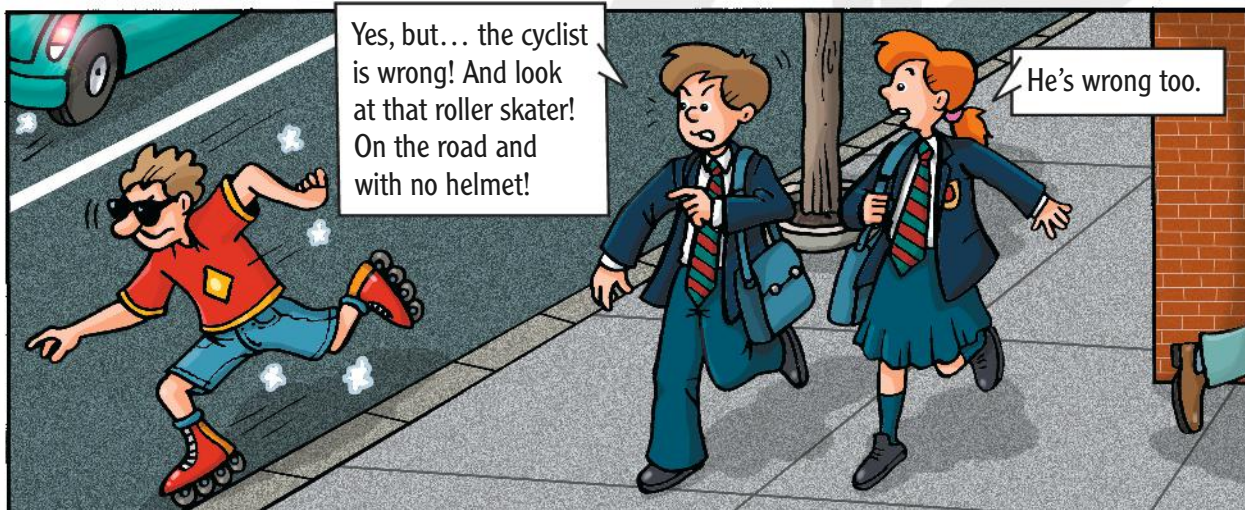
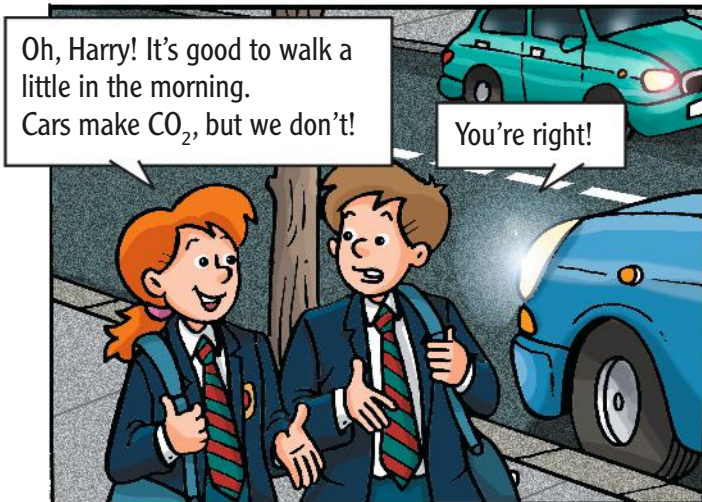
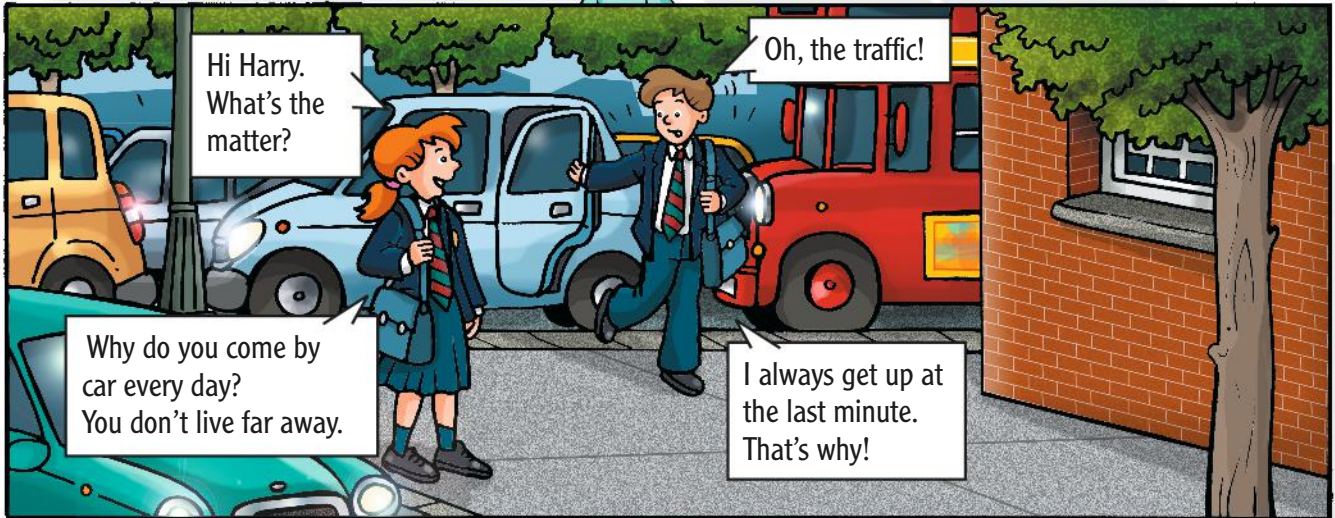
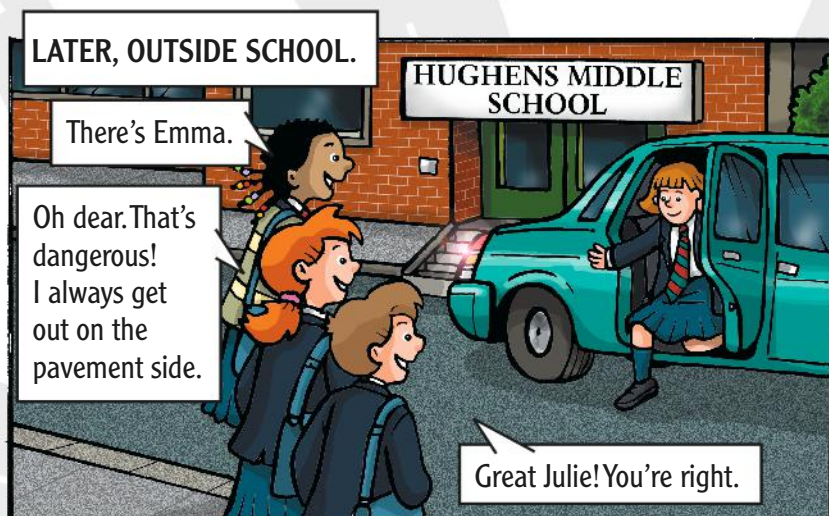
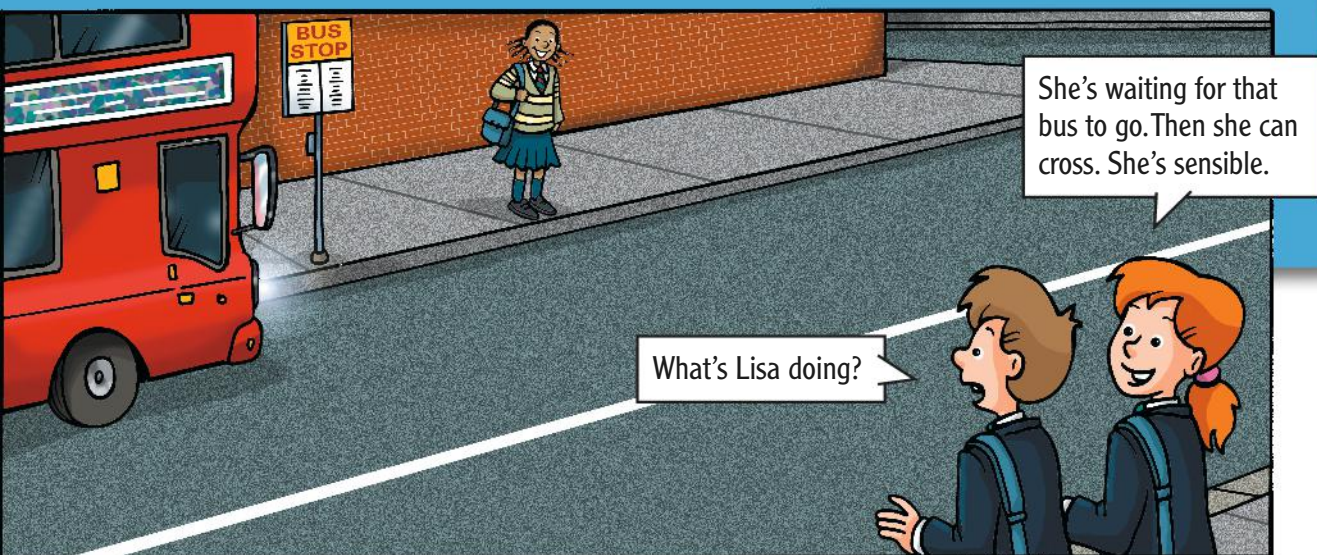




OUT WITH JULIE





1. True or false. Correct the false sentences.

- | | T | F |
|---|--------------------------|--------------------------|
| 1 Harry always goes to school on foot. | <input type="checkbox"/> | <input type="checkbox"/> |
| 2 Harry doesn't look left and right at the traffic lights. | <input type="checkbox"/> | <input type="checkbox"/> |
| 3 The roller skater can go on the road. | <input type="checkbox"/> | <input type="checkbox"/> |
| 4 Lisa crosses the road carefully. | <input type="checkbox"/> | <input type="checkbox"/> |
| 5 Lisa has reflective strips on her bag so cars can see her at night. | <input type="checkbox"/> | <input type="checkbox"/> |
| 6 Emma gets out of the car on the wrong side. | <input type="checkbox"/> | <input type="checkbox"/> |



info UK

The Highway Code

In the UK learner drivers take and pass the Highway Code theory test before they can take their practical test. The rules of the Highway Code are for all road users: pedestrians, horse riders, cyclists, drivers and motorbike riders. The Green Cross Code helps pedestrians cross roads. "Bikeability" is a programme in England for cycle training.

A passion for roller skating

You can roller skate every weekend in London. London Friday Night Skate (LFNS) leaves from Hyde Park Corner at 8 p.m. and on Sunday at 2 p.m. It's free. Proficient skaters can come, but not beginners.

and in Italy?

Do schoolchildren learn the Highway Code? Which part of it do they know? Do they pass a theory test before they can drive? What kind of test? Do people roller skate in the big cities?





Cycling



QUIZ

Are you a responsible cyclist?

1 You win a bicycle. Do you buy...

- a cake, to celebrate.
- a pair of sandals.
- ▲ a helmet.

2 For your safety (when you are cycling) you have to...

- be comfortable and relaxed.
- be visible to cars and careful.
- ▲ be fast so that you can escape danger.

3 When a person is waiting to cross the road at a zebra crossing...

- the person must wait. You can go.
- you stop and the person crosses.
- ▲ you stop only if the person is on the zebra crossing.

4 The traffic lights turn orange...

- you go through the lights carefully.
- you go faster.
- ▲ you stop immediately.

5 It starts to rain...

- you cycle very fast.
- you stop immediately.
- ▲ you cycle carefully and look for a place to shelter.

6 It's dark...

- you ring your bell.
- you put your bicycle lights on.
- ▲ you don't do anything. You can see.

7 In the UK you go past cars...

- on the left.
- on the right.
- ▲ on the right or the left.

8 When you go past parked cars...

- you go faster.
- you try not to hit the cars.
- ▲ you are careful. You watch for pedestrians, doors opening and any danger.



RESULTS

You have 7 or 8 correct answers:

You are a responsible cyclist! Well done!
Always be careful when you are on the road.

You have 5 or 6 correct answers:

You know some of the Highway Code. Now learn all of it.
It's important for your safety and the safety of other people.

You have less than 5 correct answers:

You don't know the Highway Code. This is very dangerous.
Learn it as soon as possible.

SAFE PEDALLING

Four golden rules

USE A BICYCLE THAT IS RIGHT FOR YOUR HEIGHT

- Check it regularly.

PROTECT YOURSELF

- Wear a helmet. It protects your head in an accident.
- Wear a bright jacket when you're on the road, at night or when it's foggy.
- Don't wear long scarves or carry a bag. They can cause problems.

FOLLOW THE HIGHWAY CODE

- Do you know all the road signs?
- Look at them on the Internet:
<http://think.direct.gov.uk>.

CONCENTRATE

- Always look around you, watch other people on the road and then you can react.
- Don't listen to your Mp3 player or use your mobile phone.
- When you want to turn left or right, give a hand signal.



UK Safe Cyclists

2. True or false. Five road signs are true and three are false. Find the true ones and explain them.



1



2



3



4



5



6



7



8



infoUK

1. What has your bicycle got?
Match the numbers to the words below.

handlebar ☐ pedal ☐ saddle ☐ brake ☐
front light ☐ back light ☐ bell ☐
white reflector ☒ orange reflectors ☐



RideLondon

Cycling is very popular in Britain. Every year there is an annual two-day cycling festival in London. Day one is a family ride in traffic-free roads in central London. Day two is a 100-mile route for amateur and professional cyclists. It starts in the Olympic Park.

The success of "Boris Bikes"

You can hire a bicycle for a day in London for £1. Barclays cycle hire has cycle stations all over London. You can take a bicycle, ride it and then return it to any cycle station. Many Londoners call the bikes "Boris Bikes" because the Mayor of London – Boris Johnson – introduced the bikes and he loves cycling.



and in Italy?

Do you have a bicycle service like "Boris Bikes" in your town or village?
Is it successful? Do you use it?



Learn to share the

The Walking Bus is also for older students

There are too many cars outside secondary schools at 8 o'clock in the morning. There's traffic, pollution, lots of noise and problems of road safety. This is why lots of schools ask students to come to school on the Walking Bus.

This idea started in Canada several years ago and it's successful. All students use the pedestrian bus.

How does it work?

Well, it's like a bus with a route and stops, but it's all on foot.

Parents volunteer to take a group of students to school.

Each Walking Bus has an adult driver at the front and an adult conductor at the back.

There are stops where children join the bus. The children and adults wear reflective jackets. When this idea started, it was for nursery and primary school children, but now secondary school children use it too. The students at the St Lawrence Secondary School in Bristol started their own Walking Bus.

Chris, a student at the St Lawrence Secondary School, speaks about the Walking Bus.

"Last year, when school started, our teachers were not very happy. Lots of students arrived late in the morning and there were too many cars at school.

Many of the students have the same journey. 'Let's start a Walking Bus like the primary school,' we said.

We asked the Headmaster.

He liked the idea and so did the parents. There are rules.

Students can't listen to music on the Walking Bus and we all respect the Highway Code.

About twenty people come on the Walking Bus. We feel motivated and responsible and it's fun."



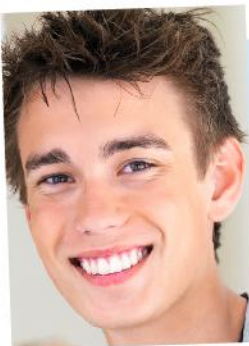
1. True or false. Correct the false statements.

- 1 Britain invented the Walking Bus.
- 2 It's a school bus that moves on foot.
- 3 It's only for secondary school children.
- 4 The Headmaster at the St Lawrence Secondary School started the Walking Bus.
- 5 At the St Lawrence School there are twenty students who go on the Walking Bus.
- 6 Students on the Walking Bus can't listen to music.
- 7 Sam says that they socialise on the Walking Bus.
- 8 Harriet loves the Walking Bus, but she finds it stressful.

T	F
<input type="checkbox"/>	<input type="checkbox"/>
<input type="checkbox"/>	<input type="checkbox"/>
<input type="checkbox"/>	<input type="checkbox"/>
<input type="checkbox"/>	<input type="checkbox"/>
<input type="checkbox"/>	<input type="checkbox"/>
<input type="checkbox"/>	<input type="checkbox"/>
<input type="checkbox"/>	<input type="checkbox"/>
<input type="checkbox"/>	<input type="checkbox"/>

road

Two students want to tell you about it



Sam – 13 years old

The Walking Bus is a great idea. We help each other and the older students look after the younger students. We encourage good behaviour. We chat and the journey is more fun.

Harriet – 13 years old

My mother always took me to school. I was late every morning because of the traffic or other problems. Now, I arrive at school relaxed and on time. There aren't many cars at school now and it's safer!



Now it's your turn

A better journey from home to school

Answer the questions.

- 1 How do you usually go to school?
- 2 How far is it from your home to school?
- 3 How long is your journey to school?
- 4 When your parents take you to school by car, it is because...
☐ of bad weather.
☐ your school is far away.
☐ the journey is dangerous on foot or by bike.
☐ another reason.
- 5 On your journey to school, how many crossroads, roads, zebra crossings and pavements look dangerous?
- 6 Do you think it's fun to go to school on foot or by bike? Why/Why not?

- 7 Are there road security problems at your school? What are they?

- 8 Do you think it's fun to take a Walking Bus to school? Why/Why not?

How can you make your journey to school

- safer?
- healthier?
- more relaxing?
- better for the environment?